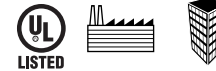


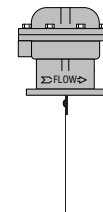
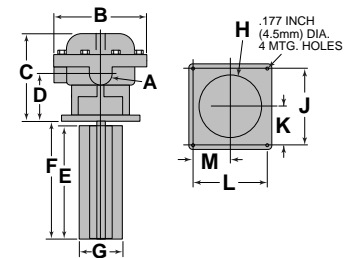
## Flow Switches – Air

### Series **AFE-1** Air Flow Switches

- For industrial hazardous environment applications requiring a **NEMA 7 (Class I, Division I, Group C and D) or NEMA 9 (Class II, Division I, Group E, F, and G)** rated flow switch for medium velocity
- ½" NPT conduit connection
- Paddle fits 8" (203mm) minimum duct size
- Brass, steel and aluminum construction
- Single pole, double throw snap switch
- Magnetic switching mechanism eliminates need for bellows
- Sensitivity adjusting screw makes flow adjustment easy
- Maximum ambient temperature 120°F (49°C)
- Maximum duct temperature 275°F (135°C)



Series AFE-1



### Electrical Ratings

| Voltage | Motor Switch Rating (Amperes) |              | Pilot Duty                                     |
|---------|-------------------------------|--------------|--|
|         | Full Load                     | Locked Rotor |  |
| 120 VAC | 7.4                           | 44.4         | 125 VA at<br>120 or 240 VAC<br>50 or 60 cycles |
| 240 VAC | 3.7                           | 22.2         |  |

### Ordering Information

| Model Number | Part Number | Description                              | Weight lbs. (kg) |
|--------------|-------------|--|------------------|
| AFE-1        | 123010      | Air flow switch w/NEMA 7 & 9 enclosure 6 | (2.7)            |

### Flow Rates – feet per minute (meters per minute)

#### Horizontal Duct (Recommended Installation)

| Mounting/<br>Duct    | Settings              | Mode of Operation |                      |
|----------------------|-----------------------|-------------------|----------------------|
|                      |                       | Flow<br>fpm (mpm) | No Flow<br>fpm (mpm) |
| Top<br>(Recommended) | Factory or<br>Minimum | 300 (91)          | 100 (30)             |
|                      | Maximum               | 1900 (579)        | 500 (152)            |
| Side                 | Factory or<br>Minimum | 350 (107)         | 100 (30)             |
|                      | Maximum               | 1950 (594)        | 900 (274)            |

Based on Standard Air 0.075 pounds per Cubic Foot (1.205 kg/m<sup>3</sup>)  
Values are ± 10%

### Dimensions, in. (mm)

| A        | B                                  | C                                       | D                                    | E                                   | F                                    |
|----------|------------------------------------|---|--------------------------------------|-------------------------------------|--------------------------------------|
| ½<br>NPT | 5¾ (146)                           | 5 <sup>13</sup> / <sub>32</sub> (137.3) | 2 <sup>29</sup> / <sub>32</sub> (74) | 7 <sup>1</sup> / <sub>8</sub> (181) | 7½ (191)                             |
| G        | H                                  | J                                       | K                                    | L                                   | M                                    |
| 2¾ (70)  | 3 <sup>5</sup> / <sub>8</sub> (92) | 4 <sup>3</sup> / <sub>8</sub> (111)     | 2 <sup>3</sup> / <sub>16</sub> (56)  | 4 <sup>3</sup> / <sub>8</sub> (111) | 2 <sup>13</sup> / <sub>16</sub> (56) |