

Single Level Switches, side mounted LS-1050E, LS-2050E, **LS-52100E**

LEVEL SWITCHES

SINGLE POINT

LEVEL SWITCHES



LS-1050E

External/Internal Mounting
For up to 20mm wall
(Hole Ø 17mm Internal Mount)



LS-2050E Brass/Buna N

General Purpose materials designed to provide reliable service in oils and water.



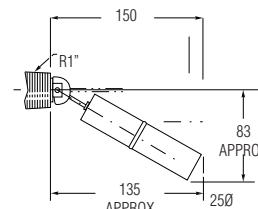
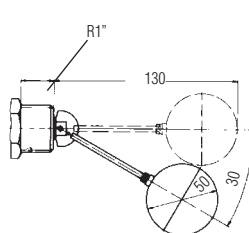
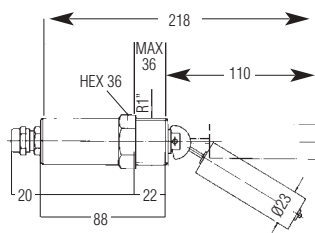
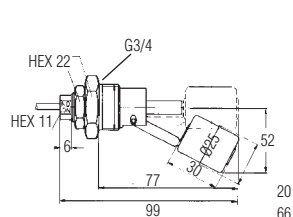
LS-2050E Stainless Steel

Ultimate strength; for pressure up to 60 bar and temperatures to 150°C



LS-52100E

Rugged, all stainless steel unit offers a broad chemical compatibility at temperatures to 150°C



Specifications

	LS-1050E	LS-2050(E) Brass/Buna N	LS-2050(E) SSteel/SSteel	LS-52100E
Materials				
Stem/mounting	Brass	Brass	Stainless Steel	Stainless Steel
Float option	Stainless Steel	Buna N	Stainless Steel	Stainless Steel
Lead wire jacket	PVC			
Min. specific gravity of the liquid	0.7 Stainless Steel	0.8	0.9	0.85
Operating temperature -40°C to	+100°C	80°C Water 110°C Oil	+150°C	+150°C
Operating pressure Max @ 25°C	16 bar	10 bar	60 bar	35 bar
Switch SPST	50 VA	SPDT 20 VA	SPDT 20 VA	SPDT 20 VA
Lead wire gauge (Approx 1m long)	Cable 0.34mm ²	Cable 0.34 mm ² PVC Terminal box	Cable 0.5mm ² silicone Terminal Box	Cable 0.5mm ² silicone Terminal Box
Float arc	36mm			
Protection rating	IP64	IP65	IP65	IP65
Weight approx.	300g	300g	350g	300g

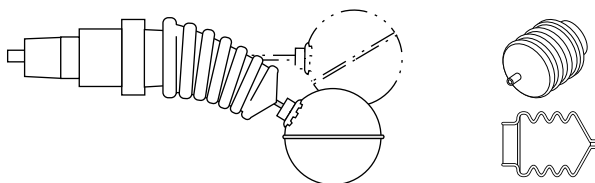
How To Order

Materials	LS-1050E	LS-2050E Brass/Buna N	LS-2050 Stainless Steel	LS-52100E Stainless Steel
Cable	011 - 1050	010 - 3465	010 - 3466	010 - 3461
Terminal Box		010 - 3463	010 - 3464	010 - 3462
Cable + Bellows	-	-	010 - 3468	-
T. Box + Bellows	-	-	010 - 3469	-

With Optional Bellows

Seals moving parts from debris and particulates that might impede shuttle movement. Available for all stainless steel LS-205E with 50mm float.

Temperature: 120°C max, Pressure; 1 bar max; Material; Buna N (Nitrile)



Switch with bellows. Bellows are not sold separately.

Standard Products in **bold**

www.gems-sensors.co.uk