



# CONTROL COMPONENTS NORTH (CCN)

## Level Sensing...



## Flow Sensing...



## Pressure Sensing...





IF YOU CAN'T  
**MEASURE IT,**  
 YOU CAN'T  
**CONTROL IT**

**CERLIC SLUDGE BLANKET PROFILE SENSORS**

*See the sludge level...*

**PROVEN NEAR INFRARED (NIR) TECHNOLOGY**

- Directly measures total suspended solids concentration (mg/L, ppm or %TSS)
- Choice of 2% or up to 5% TSS (e.g. primary or thickened sludge) models
- Not an indirect, compensated ultrasonic echo or turbidity sensor

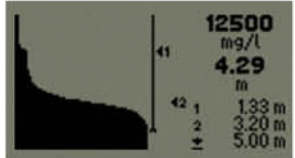
**FULLY AUTOMATIC (MOTORISED) CBX**

- Measure Sludge Blanket & Fluff (unsettled or rising solids) when triggered by rake, SCADA or timer
- Real-time TSS concentration vs depth for full sludge profile
- Continuous 4-20mA or Profibus DP (including temperature)
- Tilt switch for tangle prevention & self-cleaning (cable + sensor) for low maintenance

**HANDHELD MULTITRACKER UNIT**

- Plug 'n play Sludge Blanket Profile, DO & RAS / WAS (5% TSS)
- Backlight display, datalogging (with PC sync) & alarm points

*...rather than trying to hear it!*



SEE THEM IN ACTION!



**KARI FLOAT SWITCHES**

Reliable pump / valve control with multiple level alarms from a single float for tangle free operation.



**WEKA MAGNETIC VISUAL LEVEL INDICATORS**

- Custom made locally
- +GF+ PVC & PVDF
- 316SS
- Measuring scales & level alarms.



# PROUD TO REPRESENT...

**BACHOFEN AG**  
[www.trimodbesta.com](http://www.trimodbesta.com)

- Level measurement including Trimod Besta

**Trimod Besta**

**KARI**  
[www.karl.fi](http://www.karl.fi)

- Tilt float switches



**WEKA AG**  
[www.weka-ag.ch](http://www.weka-ag.ch)

- Magnetic visual level indicators



**AW-LAKE**  
[www.AW-Lake.com](http://www.AW-Lake.com)

- Flow sensors



**GEMS SENSORS & CONTROLS**  
[www.gemssensors.com](http://www.gemssensors.com)

- Flow, level & pressure sensors



**CC FLOW**  
[www.ccflow.com.au](http://www.ccflow.com.au)

- Flow sensors for industry leading brands



**MCDONNELL & MILLER**  
[www.mcdonnellmiller.com](http://www.mcdonnellmiller.com)

- Flow switches & level controls



**KEM**  
[www.kem-kueppers.com](http://www.kem-kueppers.com)

- Positive displacement & Coriolis flow sensors



**ITT NEO-DYN**  
[www.neodyn.com](http://www.neodyn.com)

- Pressure, vacuum & temperature switches



**KAYDEN**  
[www.kayden.com](http://www.kayden.com)

- Thermal dispersion flow sensors



**ITT CONOFLOW**  
[www.conoflow.com](http://www.conoflow.com)

- Pressure regulators, transducers & positioners



**SITRON**  
[www.sitron.com](http://www.sitron.com)

- Flow, level & pressure sensors



**ELETTA FLOW AB**  
[www.eletta.com](http://www.eletta.com)

- Differential pressure flow sensors



**CC LEVEL**  
[www.cclevel.com.au](http://www.cclevel.com.au)

- Float level switches



**CERLIC CONTROLS AB**  
[www.cerlic.com](http://www.cerlic.com)

- Water & waste water sensors



**TRIMEC / FLOMEC**  
[www.trimecind.com.au](http://www.trimecind.com.au)

- Flow sensors



## Control Components North (CCN)

**ADDRESS:** PO BOX 689, SPRINGWOOD, QLD, 4127, AUSTRALIA

**MOB:** 0418 156 469

**EMAIL:** PHIL.BOLGER@CCEZY.COM.AU **WEB:** WWW.CCEZY.COM.AU