



# LS-7 Series (Plastic)

## Compact, Side-Mount Level Switches

### Instruction Bulletin No. 78803

#### Specifications . . .

Part Number	Mounting Type	Materials		Min. Liquid Sp. Gr.	Operating Temperature	Oper Pres Max. @ 70°F	Switch* SPST	Lead Wire Gauge			
		Stem, Mounting and Float	Lead Wire Jacket								
76141	1	Polysulfone	PVC	.75	-40°F to +225°F (-40°C to +107.2°C)	150 PSI	20 VA	#22 AWG			
76142		Ryton® R-4	Teflon®	.98	-40°F to +300°F (-40°C to +148.9°C)						
76145	2	Ryton® R-4	Teflon®	.80	-40°F to +300°F (-40°C to +148.9°C)						
76147	3	Polysulfone	PVC	.75	-40°F to +225°F (-40°C to +107.2°C)						
76148		Ryton® R-4	Teflon®	.98	-40°F to +300°F (-40°C to +148.9°C)						
165570	3N	Nylon	TPE***	.65	-40°F to +250°F (-40°C to +121.1°C)				100 PSI		#22 AWG
†164520	3P	Polypropylene	TPE***	.55	-40°F to +225°F (-40°C to +107.2°C)						
76151	4	Ryton® R-4	Teflon®	.80	-40°F to +300°F (-40°C to +148.9°C)						
‡131100	5	Polypropylene	PVC	.55	-40°F to +225°F (-40°C to +107.2°C)						
**140620		Nylon	Teflon®	.65	-40°F to +250°F (-40°C to +121.1°C)						
177100		Versaplast™	Teflon®	.80	-40°F to +300°F (-40°C to +148.9°C)						
155100	7	Polysulfone	TPE***	.75	-40°F to +225°F (-40°C to +107.2°C)	150 PSI		#22 AWG			
‡160450		Polypropylene	TPE***	.55	-40°F to +225°F (-40°C to +107.2°C)	100 PSI					
160460		Nylon	TPE***	.65	-40°F to +250°F (-40°C to +121.1°C)	100 PSI					
‡165800	10	HNBR Gasket	TPE***	.55	-40°F to +225°F (-40°C to +107.2°C)	50 PSI					
165900		HNBR Gasket	TPE***	.65	-40°F to +250°F (-40°C to +121.1°C)						

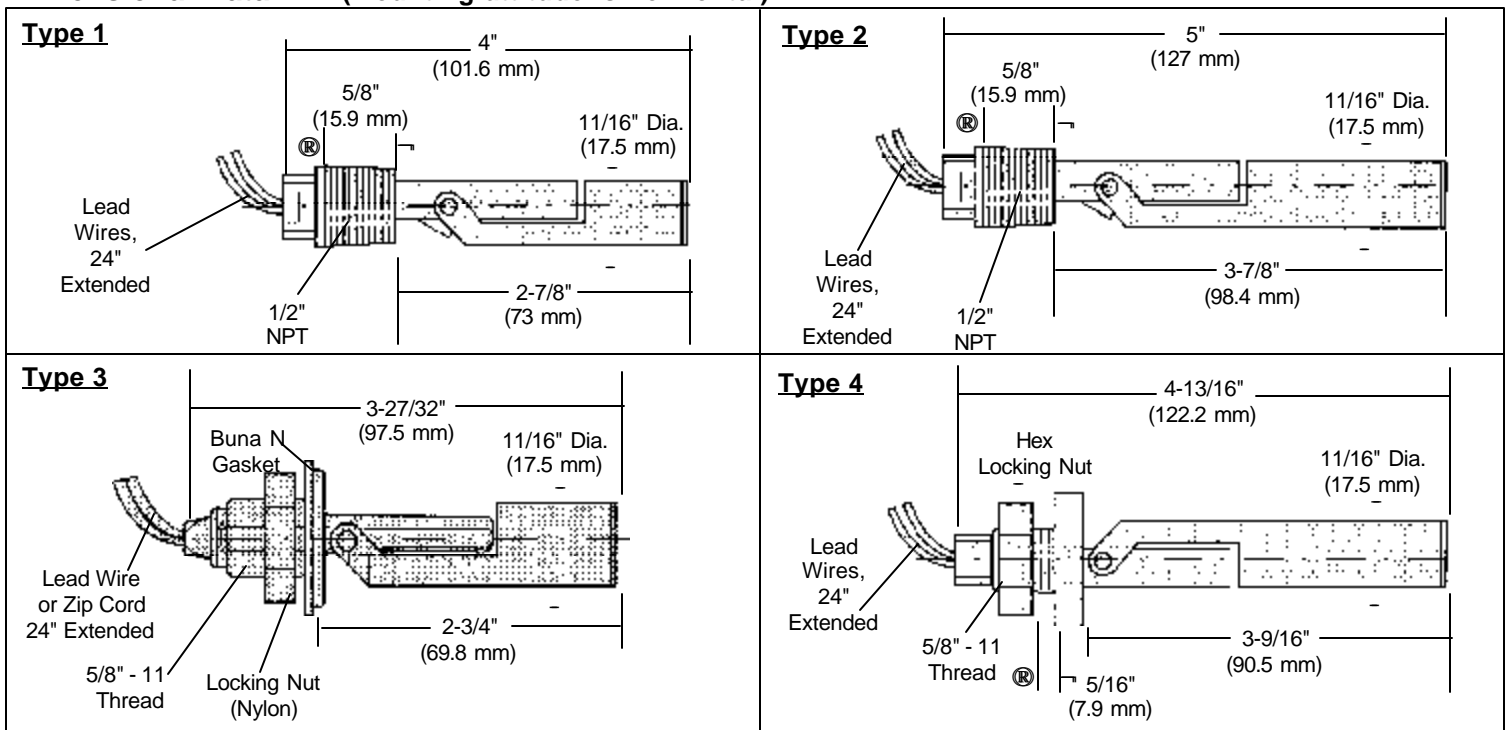
\* See electrical data on back page for more information

\*\* 18 AWG, 24" L., PVC Lead Wires

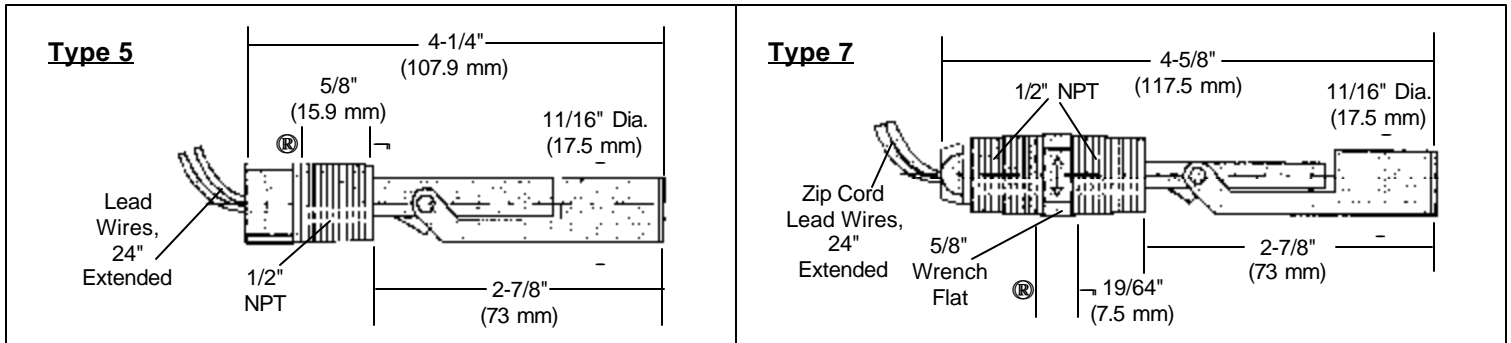
\*\*\* Thermoplastic Elastomer Zip Cord

†The hydrolytically stable, glass-reinforced polypropylene is UL-recognized to UL 746B, at a relative temperature index of 65 degrees C

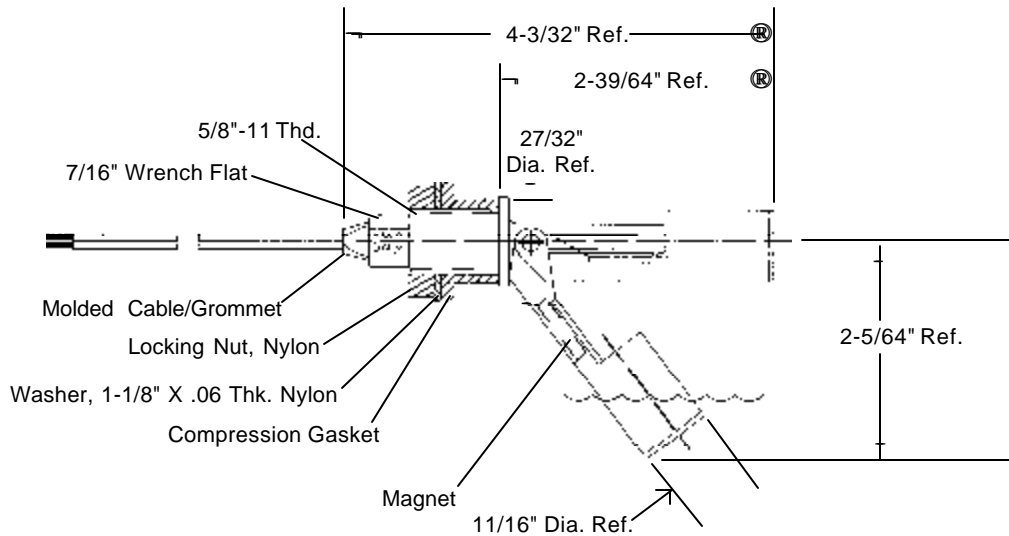
#### Dimensional Data . . . (Mounting attitude is horizontal)



## Dimensional Data (Cont.)



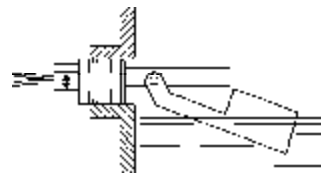
## Type 10



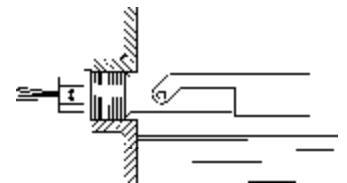
## Installation . . .

**All LS-7 Units:** Install with float positioned as shown for the required switch operation. Be sure that markings on wrench flats are as follows:

1. Arrow Vertical
2. "N.O." at Top for N.O. Operation
3. "N.C." at Top for N.C. Operation.



Unit Shown Installed  
"Float Down" for N.O.  
(Dry) Operation



Unit Shown Installed  
"Float Up" for N.C.  
(Dry) Operation

## Thread Treatment . . .

**Sealing:** When threading metal threads into a metal coupling, pipe sealant or Teflon tape is recommended. Due to potential compatibility problems, when sealing plastic threaded units, a compatible pipe sealant such as **No More Leaks** from Permatex is recommended.

**Tightening (Plastic to Metal):** When threading a plastic level switch into a metal coupling, the installer should use a suitable wrench and tighten the threads 1 to 1-1/2 additional turns past hand-tight. Over-torquing of the threads will result in damage to the plastic mounting plug.

