

## FS-105E 0.05 - 150 l/min with adjustable set-points

## FS-107E 0.1 - 90 l/min Viscosity Compensated with adjustable set-points

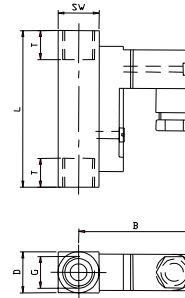
The FS-105E model operates in any mounting position. It is equipped with a calibrated piston which is displaced by flow to magnetically actuate a sealed hermetic reed switch. When flow decreases a positive spring returns the piston to its prior position and de-actuates the reed switch. The reed switch assembly is movable to allow for customer setting of flow rate within the limits of the switch selected. The adjustment does not effect the flow path, therefore pressure drop is not influenced when changing set-points. Versions are available for Liquid and Gas flow. Robust components allow a pressure of 250 bar, ideally suited for High pressure cleaning and lubrication systems.

The FS-107E model operates in any mounting position. It is equipped with a calibrated piston in a calibrated orifice for viscosity compensation over 1 to 600 cSt. The piston is displaced by flow to magnetically actuate a sealed hermetic reed switch. When flow decreases a positive spring returns the piston to its prior position and de-actuates the reed switch. The reed switch assembly is movable to allow for customer setting of flow rate within the limits of the switch selected. The adjustment does not effect the flow path, therefore pressure drop is not influenced when changing set-points. Robust components allow a pressure of 250 bar, ideally suited for High pressure lubrication systems.

Specifications	FS-105E	FS-107E
<b>Max Flow</b>	100% above max. set-point range	100% above max. set-point range
<b>Max Operating Pressure</b>	250 bar	250 bar
<b>Pressure Drop</b>	0.02 to 0.4 bar	0.02 to 0.4 bar
<b>Operating Temperature</b>	-20 to 120°C	-20 to 120°C
<b>Adjustable Range</b>	see order number	see order number
<b>Switching Function</b>	NO with no flow, SPDT available	NO with no flow, SPDT available
<b>Mounting Position</b>	Any position	Any position
<b>Repeatability</b>	1% of range	1% of range
<b>Adjustment Scale Accuracy</b>	+/- 10%	+/- 5%
<b>Hysteresis</b>	max 20%	max 20%
<b>Mountings</b>	G <sup>1</sup> / <sub>4</sub> , G <sup>1</sup> / <sub>2</sub> , G1	G <sup>1</sup> / <sub>2</sub> , G1
<b>Electrical Connection</b>	Din 43650, Mini for G <sup>1</sup> / <sub>4</sub> , G <sup>1</sup> / <sub>2</sub> , Std for G1	Din 43650
<b>Enclosure</b>	IP 65	IP 65
<b>Electrical Contact Rating</b>	NO - 250V, 1A, 100VA - G1 port NO - 220V, 1A, 100VA - G <sup>1</sup> / <sub>2</sub> port NO - 200V, 1A, 20VA - G <sup>1</sup> / <sub>4</sub> port SPDT - 250V, 1.5A, 50VA - G1, G <sup>1</sup> / <sub>2</sub> SPDT - 200V, 1A 20VA - G <sup>1</sup> / <sub>4</sub> port	NO - 250V, 3A, 100VA - G1 port NO - 220V, 1A, 100VA - G <sup>1</sup> / <sub>2</sub> port
<b>Weight (approx)</b>	G <sup>1</sup> / <sub>4</sub> - 140g, G <sup>1</sup> / <sub>2</sub> - 350g, G1 - 1000g	



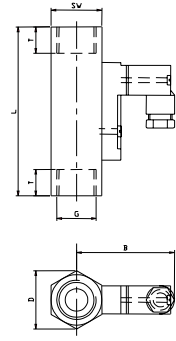
Dimensions



Dimension	SW	D	B	G	T	L
	17	17	47	1/4	10	65
	27	31	52	1/2	14	90
	41	47	72	1	17	130



Dimensions

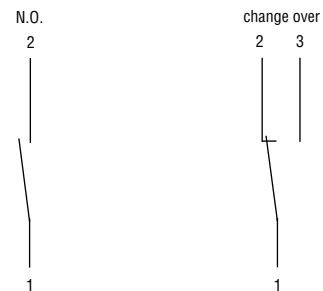


Dimension	SW	D	B	G	T	L
	27	31	52	1/2	14	90
	41	47	72	1	17	130

Meter 17mm wide

Housing Nickel plated Brass  
Piston Brass  
Spring Stainless Steel

### Wiring



### Order numbers for FS-105E

Adj Range L/min	Order 'NO'	Number 'SPDT'	Port
5-60 ml	027-0100	027-0120	G <sup>1</sup> / <sub>4</sub> "
20-140ml	027-0101	027-0121	G <sup>1</sup> / <sub>4</sub> "
0.1-0.6	027-0102	027-0122	G <sup>1</sup> / <sub>4</sub> "
0.2-1.2	027-0103	027-0123	G <sup>1</sup> / <sub>4</sub> "
0.4-2.0	027-0104	027-0124	G <sup>1</sup> / <sub>4</sub> "
0.5-3.0	027-0105	027-0125	G <sup>1</sup> / <sub>4</sub> "
1.0-5.0	027-0106	027-0126	G <sup>1</sup> / <sub>4</sub> "
0.02-0.2	027-0107	027-0127	G <sup>1</sup> / <sub>2</sub> "
0.1-0.6	027-0108	027-0128	G <sup>1</sup> / <sub>2</sub> "
0.4-1.8	027-0109	027-0129	G <sup>1</sup> / <sub>2</sub> "
0.8-3.2	027-0110	027-0130	G <sup>1</sup> / <sub>2</sub> "
2-7	027-0111	027-0131	G <sup>1</sup> / <sub>2</sub> "
3-13	027-0112	027-0132	G <sup>1</sup> / <sub>2</sub> "
4-20	027-0113	027-0133	G <sup>1</sup> / <sub>2</sub> "
8-30	027-0114	027-0134	G <sup>1</sup> / <sub>2</sub> "
15-45	027-0115	027-0135	G1"
30-90	027-0116	027-0136	G1"
60-150	027-0117	027-0137	G1"

### Order numbers for FS-107E

Adj Range L/min	Order 'NO'	Number SPDT	Port	Order No with visual indication 'NO'	'SPDT'
0.1-0.8	027-0300	027-0320	G <sup>1</sup> / <sub>2</sub> "		
0.4-1.6	027-0301	027-0321	G <sup>1</sup> / <sub>2</sub> "		
0.8-3	027-0302	027-0322	G <sup>1</sup> / <sub>2</sub> "		
2-7	027-0303	027-0323	G <sup>1</sup> / <sub>2</sub> "		
0.1-0.8	027-0304	027-0324	G1"	027-0340	027-0360
0.5-1.5	027-0305	027-0325	G1"	027-0341	027-0361
1-4	027-0306	027-0326	G1"	027-0342	027-0362
2-8	027-0307	027-0327	G1"	027-0343	027-0363
3-10	027-0308	027-0328	G1"	027-0344	027-0364
5-15	027-0309	027-0329	G1"	027-0345	027-0365
8-24	027-0310	027-0330	G1"	027-0346	027-0366
10-30	027-0311	027-0331	G1"	027-0347	027-0367
15-45	027-0312	027-0332	G1"	027-0348	027-0368
20-60	027-0313	027-0333	G1"	027-0349	027-0369
30-90	027-0314	027-0334	G1"	027-0350	027-0370



FLOW SWITCHES